

LVL UP Garage Flooring

Interlocking Garage Tile Installation Guide

Tools & Materials Required

- Interlocking garage tiles
- Edge ramps (if used)
- Measuring tape
- Chalk line or straight edge
- Pencil/marker
- **LVL UP Tile Cutter (recommended)**
- **Table saw or angle grinder** (alternative cutting methods)
- **Jigsaw** (for detailed or corner cuts)
- Rubber mallet (optional)
- Safety glasses & gloves

Step 1: Measure & Plan Your Layout

What to do:

1. Measure the full length and width of your space.
2. Calculate how many full tiles you will need **across** and **up** the area.
3. If using an inside border, plan where the border will **start and stop**.
4. Dry-plan the layout so cut tiles finish neatly against walls.

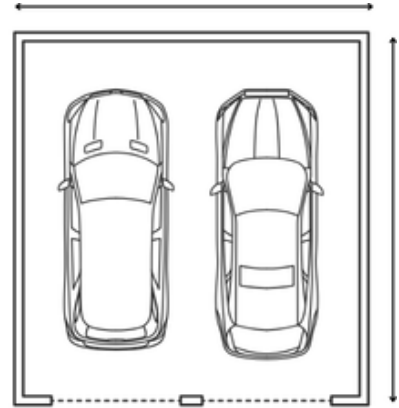


Image 1 – Measuring & layout planning

Step 2: Check Tile Orientation

What to do:

Ensure **all tiles are facing the same direction** before clicking together. - Match the **male and female connectors** consistently across the floor.

⚠️ Incorrect orientation will prevent proper locking.

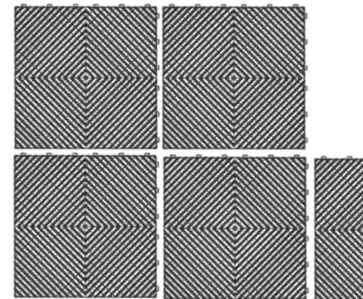


Image 2 – Correct vs incorrect tile direction

Step 3: Lay the First Row at the Entry (Roller Door)

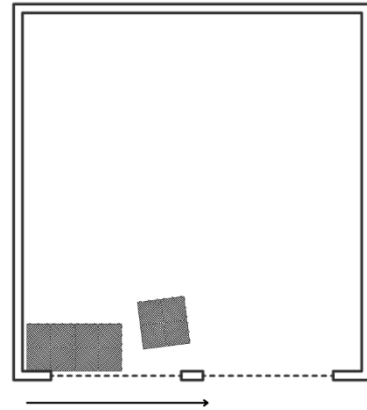
What to do:

1. In most garages, start the **first row directly at the roller door entry**.
2. Lay tiles **side-to-side across the roller door opening**.
3. Continue until you cannot place any more **full tiles without cutting**.
4. Keep the tiles **hard up against one wall** to ensure the floor stays square.

Tip: Starting at the roller door ensures ramps align cleanly and the entire floor remains straight.

i Open or non-confined spaces: If installing in an open showroom, gym, or space with ramps on all four sides, the starting position is more flexible. Alignment is still important, but the exact starting edge is less critical.

Image 3 – First row laid across the roller door entry



Step 4: Install the Entry Ramps

What to do:

1. Click the ramp pieces directly into the first row of tiles.
2. Once connected, slide the entire row into its **final position**.
3. Re-check squareness before continuing.



Image 4 – Ramp installation

Step 5: Build Out the Floor

What to do:

Continue clicking tiles row by row, working **up the space**. - Maintain consistent pressure so all tiles lock fully. - Stop when you reach walls or obstacles where full tiles no longer fit.

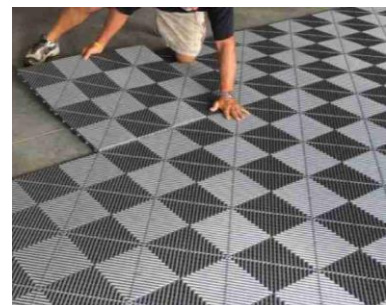


Image 5 – Working through the garage

Step 6: Cut Tiles to Fit

What to do:

1. Measure gaps along walls, corners, and edges.
2. Mark tiles clearly before cutting.
3. Cut tiles using a **LVL UP Tile Cutter, table saw, tile cutter, angle grinder, or circular saw**.
4. Ensure tiles are **clamped and fully secure** when using portable power tools.
5. Install cut tiles to finish the perimeter.


 Always wear appropriate safety gear when cutting.



Image 6 – Cutting and finishing edges

Final Check

- Walk the entire floor to ensure all tiles are fully clicked.
 - Confirm ramps and borders are secure.
 - Enjoy your upgraded garage floor.
-

LVL UP Garage Flooring

Premium look. Practical install. Built to perform.